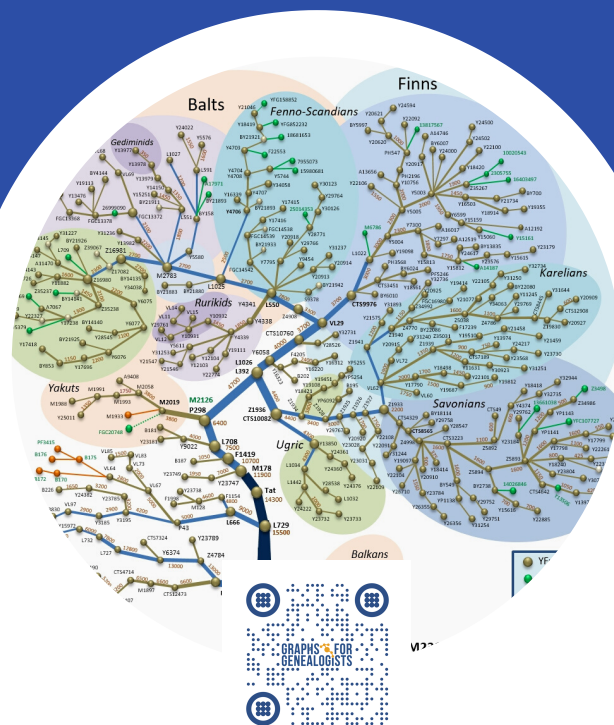


About Us

Graphs for Genealogist (GFG) was designed by a physician who combined his unique experience as an MD and PhD in healthcare and academia to create an open source software package that leverages complex algorithms from Neo4j Graph Data Science to unlock communities aligned with family tree branches. GFG makes complex analytics easy to execute and visualizes data that creates 3-D renderings of genealogy research results. GFG is a product of Who Am I, LLC

www.wai.md



Contact Us
847.494.7589

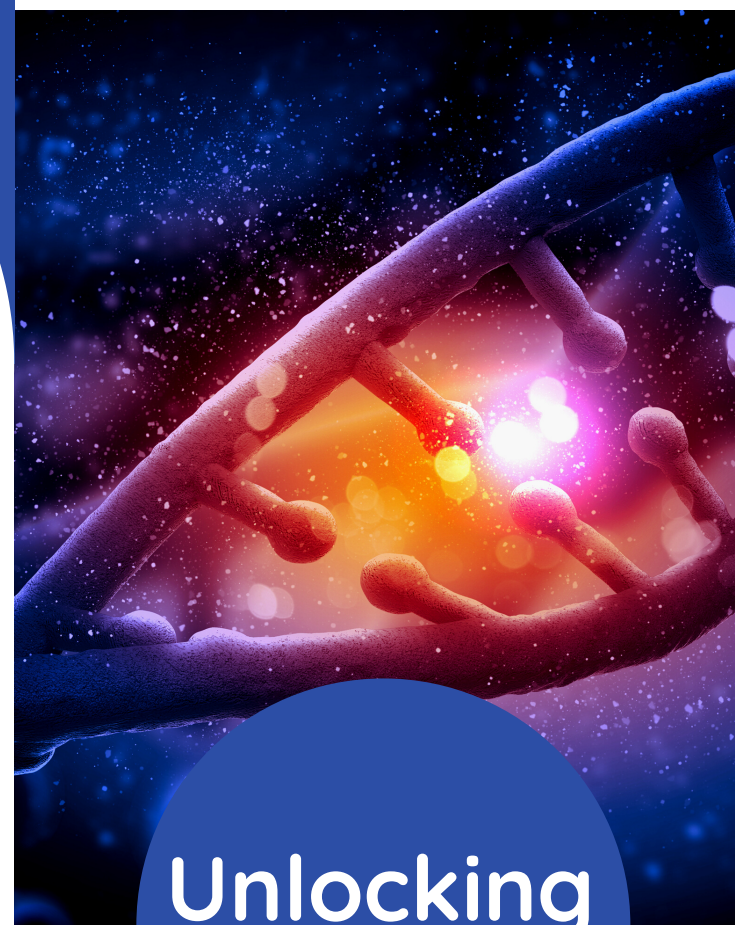


Our Website
www.wai.md



Our Address
1101 Alpine Lane
Woodstock, IL 60098

GRAPHS FOR GENEALOGISTS



Unlocking DNA

www.wai.md



GRAPHS FOR GENEALOGISTS

We have developed unique tools using advanced graph analytics to link family tree graphs to graphs created by client's DNA matches. Creating autosomal haplotrees allows one to test hypotheses and discover clues about distant ancestors. Graphs for Genealogists (GFG) uses data familiar to genealogists. We are looking for individuals to join our project to assist our further development of graph analytics in this billion-dollar industry.

About Who Am I

Whether you've done extensive research and just hit a dead-end or have little to no information and don't know where to start, Dr. Stumpf's professional genealogical services can help you discover the identity of who you are. He combines his expertise in genealogical research and records with his medical and academia background as a pediatric neurologist to provide answers to the most complex questions.

www.wai.md



List of Services



Research

Leverage Dr. Stumpf's five decades of research expertise to discover your heritage



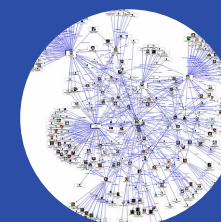
DNA Analysis

As a MD/PhD, Dr. Stumpf has experience managing complex DNA projects



Lectures

Teaching is Dr. Stumpf's passion and as a doctor he has a knack for translating complex concepts



Graphs

Using advanced graph analytics, link your family tree to graphs created by your DNA matches

www.wai.md